



# GENERAL PURPOSE SINGLE PHASE

For commercial and industrial applications such as pumps, fans, blowers, conveyors and tools.

**HP** – 1/12 through 10 HP

**RPM** – 3600, 1800, 1200, 900  
(Some Two Speed Ratings Available)

**Voltage** – Operable on 115V, 208V or  
230V 60HZ

**Construction** – Rolled Steel Frame

**Bearings** – Ball or Sleeve Bearings

**Ambient** – 40°C Rated

**Thermal Overload** –

- Automatic Reset Thermal Overload Protector
- Manual Reset Thermal Overload Protector
- Non-Protected

**Agency** – UL<sup>®</sup> Recognized and CSA<sup>®</sup> Certified

† All marks shown within this document are properties of their respective owners.



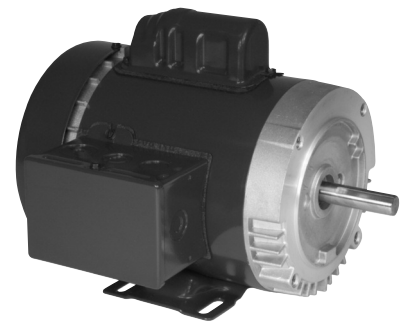
## EXTENSIVE LINE OF GENERAL PURPOSE SINGLE PHASE MOTORS



**Open Dripproof  
Split Phase**



**Totally Enclosed Fan Cooled  
Split Phase**



**Totally Enclosed Fan Cooled  
C-Face**